



# INSPECTION SUMMARY REPORT

Parent Edition | 2023-2024

GREENWOOD INTERNATIONAL SCHOOL

US

GOOD

GREENWOOD INTERNATIONAL SCHOOL  
US

Inspection Dates  
06 - 10 November 2023

Principal  
Lina Ali El Halabi

LEARN MORE ABOUT THE SCHOOL

LEARN MORE ABOUT THE SCHOOL FEES

1265 Students

1015 Emirati Students

59 Students of Determination

107 Teachers

26 Teaching Assistants

2 Guidance counsellors

## OVERALL SCHOOL PERFORMANCE

GOOD

<b>OUTSTANDING</b>	Quality of performance substantially exceeds the expectation of the UAE
<b>VERY GOOD</b>	Quality of performance exceeds the expectation of the UAE
<b>GOOD</b>	Quality of performance meets the expectation of the UAE (This is the expected level for every school in the UAE)
<b>ACCEPTABLE</b>	Quality of performance meets the minimum level of quality required in the UAE
<b>WEAK</b>	Quality of performance is below the expectation of the UAE
<b>VERY WEAK</b>	Quality of performance is significantly below the expectation of the UAE

## WHAT ARE THE SCHOOLS' HIGHLIGHTS AND POINTS TO IMPROVE?

### SCHOOLS HIGHLIGHTS

- The excellent start that children make in Kindergarten and students' excellent attitudes and behaviour
- The improving academic achievements of students in many core subjects
- The arrangements to support the care, welfare, well-being and safety of students
- The senior leadership for the continuing improvement of the school

### POINTS TO IMPROVE

- The consistent use of the data information to improve the way teachers deliver and modify their lessons
- Students' achievement in the subject of Arabic, especially in elementary and middle schools
- Representation on the governing board, so as to receive more objective points of view and to hear students' ideas

## WELLBEING

THE OVERALL JUDGEMENT OF WELLBEING IS **GOOD**.



The caring approach towards students is a strength. Led by an effective team, the school prioritises well-being and has comprehensive policies and action plans in place. Personal development is a priority, and strong Islamic values underpin generally good behavior. Classrooms are engaging and there are strong partnerships with parents. There is a culture of respect, and this contributes to personal well-being.

## STUDENT'S ACHIEVEMENTS

Children in KG make a very effective start to school. There have been improvements in progress in both Arabic and Islamic Education in the middle school and in mathematics and science in elementary and middle schools respectively.

ENGLISH	MATHS	SCIENCE
ATTAINMENT	ATTAINMENT	ATTAINMENT
PROGRESS	PROGRESS	PROGRESS
KG: VERY GOOD, VERY GOOD	KG: VERY GOOD, VERY GOOD	KG: GOOD, GOOD
ELEMENTARY: GOOD, GOOD	ELEMENTARY: ACCEPTABLE, GOOD	ELEMENTARY: GOOD, GOOD
MIDDLE: GOOD, GOOD	MIDDLE: ACCEPTABLE, GOOD	MIDDLE: GOOD, GOOD
HIGH: GOOD, GOOD	HIGH: GOOD, GOOD	HIGH: GOOD, GOOD

ARABIC AS FIRST LANGUAGE	ARABIC AS SECOND LANGUAGE	ISLAMIC
ATTAINMENT	ATTAINMENT	ATTAINMENT
PROGRESS	PROGRESS	PROGRESS
KG: NOT APPLICABLE, NOT APPLICABLE	KG: NOT APPLICABLE, NOT APPLICABLE	KG: NOT APPLICABLE, NOT APPLICABLE
ELEMENTARY: ACCEPTABLE, ACCEPTABLE	ELEMENTARY: ACCEPTABLE, ACCEPTABLE	ELEMENTARY: ACCEPTABLE, GOOD
MIDDLE: ACCEPTABLE, GOOD	MIDDLE: ACCEPTABLE, ACCEPTABLE	MIDDLE: GOOD, GOOD
HIGH: GOOD, GOOD	HIGH: ACCEPTABLE, ACCEPTABLE	HIGH: GOOD, GOOD

LEARNING SKILLS
KG: VERY GOOD
ELEMENTARY: GOOD
MIDDLE: GOOD
HIGH: GOOD



## STUDENT'S PERSONAL AND SOCIAL DEVELOPMENT

Students personal and social development is a strength of the school and students' appreciation of Islamic values and social contributions respectively have improved.



PERSONAL DEVELOPMENT	UNDERSTANDING OF ISLAMIC VALUES & AWARENESS OF EMIRATI & WORLD CULTURES	SOCIAL RESPONSIBILITY & INNOVATIVE SKILLS
KG: VERY GOOD	KG: OUTSTANDING	KG: VERY GOOD
ELEMENTARY: VERY GOOD	ELEMENTARY: OUTSTANDING	ELEMENTARY: VERY GOOD
MIDDLE: VERY GOOD	MIDDLE: OUTSTANDING	MIDDLE: VERY GOOD
HIGH: OUTSTANDING	HIGH: OUTSTANDING	HIGH: OUTSTANDING

## PROVISION FOR LEARNERS

Teaching and assessment in Kindergarten (KG) are strong, showing notable improvements in assessment recently. The school effectively collects and analyses student data, showing a commitment to evidence-based teaching. However, using this data consistently in the classroom varies, leading to some students not receiving the support or challenge they need. Addressing this inconsistency is important for enhancing student outcomes.

The curriculum remains a strength, especially in high school, thanks to a broad and imaginative range of elective courses. These provide diverse and engaging learning opportunities. However, the school could further strengthen how it adapts the curriculum based on assessment data, ensuring that learning is always targeted and effective.

The school has robust systems in place to ensure a safe, secure, and supportive environment, reflecting its commitment to student wellbeing. These comprehensive measures cover both physical safety and emotional support, essential for fostering a positive learning atmosphere where all students can thrive. This commitment to a nurturing environment is a cornerstone of the school's approach and contributes significantly to its educational success.



TEACHING	ASSESSMENT	CURRICULUM DESIGN
KG: VERY GOOD	KG: VERY GOOD	KG: GOOD
ELEMENTARY: GOOD	ELEMENTARY: GOOD	ELEMENTARY: GOOD
MIDDLE: GOOD	MIDDLE: GOOD	MIDDLE: GOOD
HIGH: GOOD	HIGH: GOOD	HIGH: VERY GOOD

CURRICULUM ADAPTATION	HEALTH & SAFETY	CARE & SUPPORT
KG: GOOD	KG: OUTSTANDING	KG: VERY GOOD
ELEMENTARY: GOOD	ELEMENTARY: OUTSTANDING	ELEMENTARY: VERY GOOD
MIDDLE: GOOD	MIDDLE: OUTSTANDING	MIDDLE: VERY GOOD
HIGH: GOOD	HIGH: OUTSTANDING	HIGH: VERY GOOD

## INCLUSION

THE OVERALL PROVISION OF STUDENTS OF DETERMINATION IS **GOOD**.

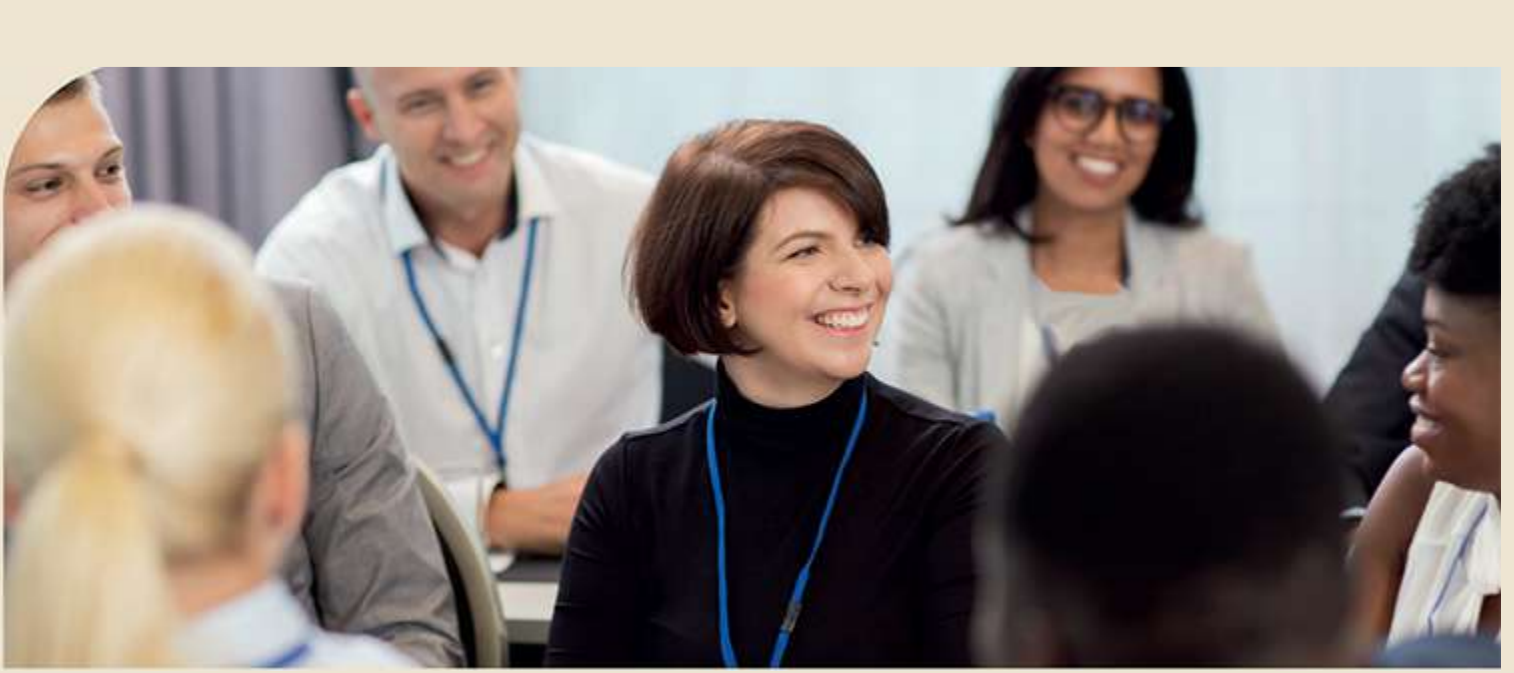
The school champions inclusion, welcoming all students. Specialist teachers, using individual education plans, offer tailored support, with parents actively involved. Home-school communication is good but could improve. Most teachers adapt lessons to lower learning barriers. Comprehensive assessment systems track students' personal and academic progress, ensuring a supportive and effective learning environment. This approach reflects the school's commitment to fostering an inclusive atmosphere where every student has the opportunity to succeed.



## LEADERSHIP AND MANAGEMENT

Leadership across the school is strong, with the Principal being a notably talented and impactful leader. Since last inspection, the leadership team has been restructured to include leaders responsible for curriculum and teaching and learning. The procedures for self-evaluation are now much more inclusive and accurate. Resources across the school have improved but are yet to produce a sustained impact.

THE EFFECTIVENESS OF LEADERSHIP	GOOD
SCHOOL SELF-EVALUATION AND IMPROVEMENT PLANNING	GOOD
PARENTS AND THE COMMUNITY	VERY GOOD
GOVERNANCE	GOOD
MANAGEMENT, STAFFING, FACILITIES AND RESOURCES	GOOD



[CLICK HERE TO ACCESS THE FULL INSPECTION REPORT FOR THIS SCHOOL](#)